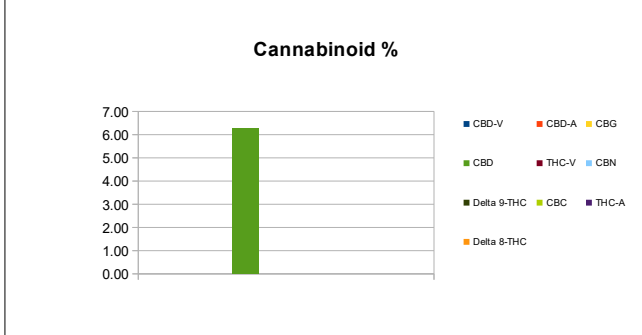



Sample Information			
Sample Identification	Hemp Bomb Pet Oil 125mg (2)		
Laboratory Number	2018009010		
Batch Number	N/A		
Matrix	Tincture		
Analyzed Date	07/06/18		
Extraction Date	07/06/18		
Cannabinoid (HPLC)	mg/mL	mg /Bottle	%
<b>Compound</b>			
CBD-V	0.00	0.00	0.00%
CBD-A	0.00	0.00	0.00%
CBG	0.00	0.00	0.00%
CBD	6.27	188.19	0.64%
THC-V	0.00	0.00	0.00%
CBN	0.00	0.00	0.00%
Delta 9-THC	0.00	0.00	0.00%
CBC	0.00	0.00	0.00%
THC-A	0.00	0.00	0.00%
Delta 8-THC	0.00	0.00	0.00%
<b>Cannabinoids Total</b>			
<b>Max Active THC</b>	<b>0.00</b>	<b>0.00</b>	<b>0.00%</b>
<b>Max Active CBD</b>	6.27	188.19	0.64%
<b>T. Active Cannabinoids</b>	6.27	188.19	0.64%
<b>Total Cannabinoids</b>	6.27	188.19	0.64%

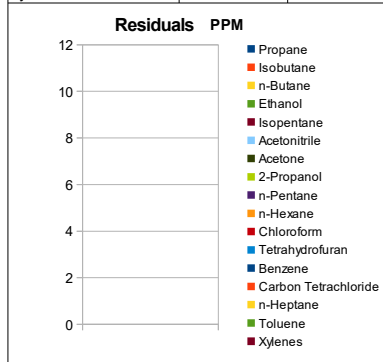
Max Active Ratios	
NA	:1 CBD to THC
0.0	:1 THC to CBD



Sample Image	
	
<b>Micro Visual:</b>	NT
<b>Percent Moisture</b>	NT



RS (GCMS-HS)	PPM	RL
<b>Compound</b>		
Propane	NT	5.0
Isobutane	NT	5.0
n-Butane	NT	5.0
Ethanol	NT	5.0
Isopentane	NT	5.0
Acetonitrile	NT	5.0
Acetone	NT	50.0
2-Propanol	NT	5.0
n-Pentane	NT	5.0
n-Hexane	NT	5.0
Chloroform	NT	5.0
Tetrahydrofuran	NT	5.0
Benzene	NT	5.0
Carbon Tetrachloride	NT	5.0
n-Heptane	NT	5.0
Toluene	NT	5.0
Xylenes	NT	10.0



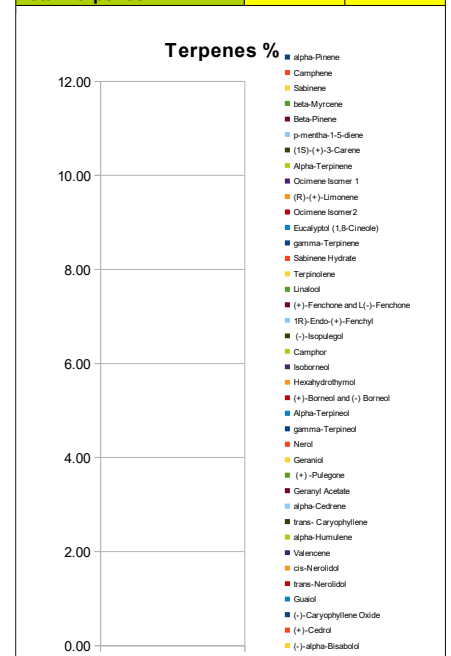
<b>mL/bottle</b>	30
<b>mg THC/bottle</b>	0
<b>mg CBD/bottle</b>	188.19
<b>(mg) total cannabinoids/bottle</b>	188.19

Metals	PPM	RL
<b>Compound</b>		
Lead	NT	0.010
Arsenic	NT	0.010
Cadmium	NT	0.010
Mercury	NT	0.001

RL=Reporting Limit  
NA=Not Applicable  
NT=Not Tested



Terpene (GC-MS)	mg/mL	mg/Bottle
<b>Compound</b>		
alpha-Pinene	NT	NT
Camphene	NT	NT
Sabinene	NT	NT
beta-Myrcene	NT	NT
Beta-Pinene	NT	NT
p-mentha-1-5-diene	NT	NT
(1S)-(+)-3-Carene	NT	NT
Alpha-Terpinene	NT	NT
Ocimene Isomer 1	NT	NT
(R)-(+)-Limonene	NT	NT
Ocimene Isomer2	NT	NT
Eucalyptol (1,8-Cineole)	NT	NT
gamma-Terpinene	NT	NT
Sabinene Hydrate	NT	NT
Terpinolene	NT	NT
Linalool	NT	NT
(+)-Fenchone and L(-)-Fenchone	NT	NT
1R)-Endo-(+)-Fenchyl	NT	NT
(-)-Isopulegol	NT	NT
Camphor	NT	NT
Isoborneol	NT	NT
Hexahydrothymol	NT	NT
(+)-Borneol and (-) Borneol	NT	NT
Alpha-Terpineol	NT	NT
gamma-Terpineol	NT	NT
Nerol	NT	NT
Geraniol	NT	NT
(+)-Pulegone	NT	NT
Geranyl Acetate	NT	NT
alpha-Cedrene	NT	NT
trans- Caryophyllene	NT	NT
alpha-Humulene	NT	NT
Valencene	NT	NT
cis-Nerolidol	NT	NT
trans-Nerolidol	NT	NT
Guaiol	NT	NT
(-)-Caryophyllene Oxide	NT	NT
(+)-Cedrol	NT	NT
(-)-alpha-Bisabolol	NT	NT
<b>Total Terpenes</b>	<b>NT</b>	<b>NT</b>



Chemist: □m JG