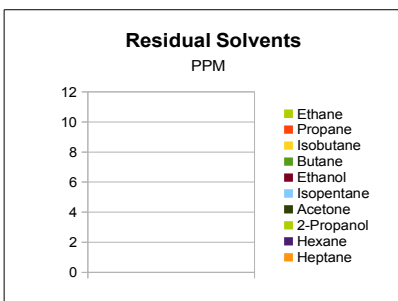


Sample Information		
Sample Identification	7017	
Laboratory Number	2018003454 DUP	
Batch Number	NA	
Matrix	Medible	
Analyzed Date	03/13/18	
Extraction Date	03/13/18	
Cannabinoid (HPLC)	%	mg/g
Compound		
CBD-V	0.00%	0.02
CBD-A	0.00%	0.01
CBG	0.00%	0.00
CBD	0.58%	5.80
THC-V	0.00%	0.00
CBN	0.00%	0.00
Delta 9-THC	0.00%	0.00
CBC	0.00%	0.00
THC-A	0.00%	0.00
Delta 8-THC	0.00%	0.00
Cannabinoids Total		
Max Active THC	0.00%	0.00
Max Active CBD	0.58%	5.81
T. Active Cannabinoids	0.58%	5.81
Total Cannabinoids	0.58%	5.82
Max Active Ratios		
NA :1 CBD to THC		
0.0 :1 THC to CBD		



RS (GCMS-HS) Compound	PPM	RL
Ethane	NT	20.0
Propane	NT	5.0
Isobutane	NT	5.0
Butane	NT	5.0
Ethanol	NT	5.0
Isopentane	NT	5.0
Acetone	NT	50.0
2-Propanol	NT	5.0
Hexane	NT	5.0
Heptane	NT	5.0



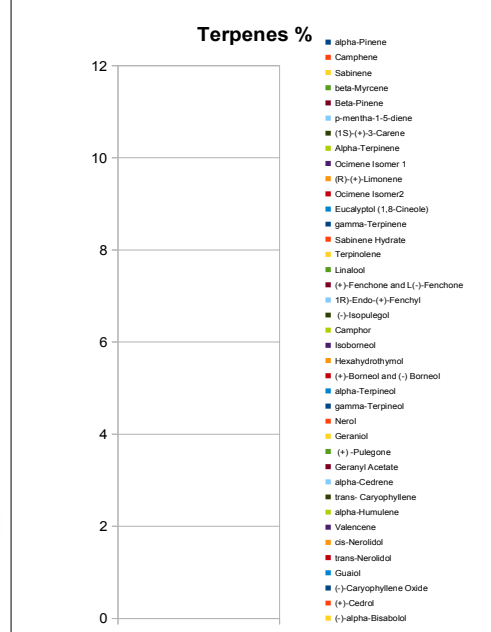
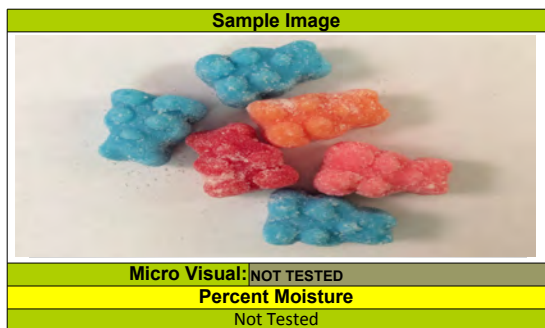
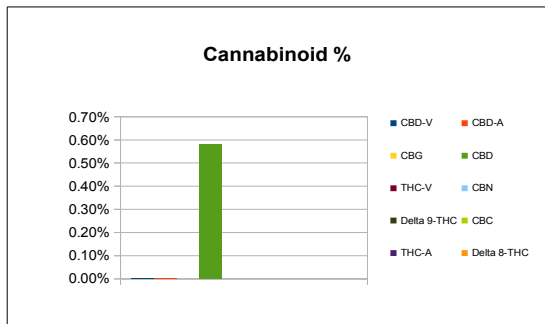
g/medible	2.7
mg THC/medible	0
mg CBD/medible	15.66
(mg) total cannabinoids/medible	15.74

Metals Compound	PPM	RL
Mercury	NT	0.001
Lead	NT	0.010
Arsenic	NT	0.010
Cadmium	NT	0.010

RL=Reporting Limit
NA=Not Applicable
NT=Not Tested



Terpene (GC-MS) Compound	%	mg/g
alpha-Pinene	NT	NT
Camphene	NT	NT
Sabinene	NT	NT
beta-Myrcene	NT	NT
Beta-Pinene	NT	NT
p-mentha-1,5-diene	NT	NT
(1S)-(+)-3-Carene	NT	NT
Alpha-Terpinene	NT	NT
Ocimene Isomer 1	NT	NT
(R)-(+)-Limonene	NT	NT
Ocimene Isomer2	NT	NT
Eucalyptol (1,8-Cineole)	NT	NT
gamma-Terpinene	NT	NT
Sabinene Hydrate	NT	NT
Terpinolene	NT	NT
Linalool	NT	NT
(+)-Fenchone and L(-)-Fenchone	NT	NT
1R)-Endo-(+)-Fenchyl	NT	NT
(-)-Isopulegol	NT	NT
Camphor	NT	NT
Isoborneol	NT	NT
Hexahydrothymol	NT	NT
(+)-Borneol and (-) Borneol	NT	NT
alpha-Terpineol	NT	NT
gamma-Terpineol	NT	NT
Nerol	NT	NT
Geraniol	NT	NT
(+)-Pulegone	NT	NT
Geranyl Acetate	NT	NT
alpha-Cedrene	NT	NT
trans- Caryophyllene	NT	NT
alpha-Humulene	NT	NT
Valencene	NT	NT
cis-Nerolidol	NT	NT
trans-Nerolidol	NT	NT
Guaiol	NT	NT
(-)-Caryophyllene Oxide	NT	NT
(+)-Cedrol	NT	NT
(-)-alpha-Bisabolol	NT	NT
Total Terpenes	NT	NT



Chemist: EG